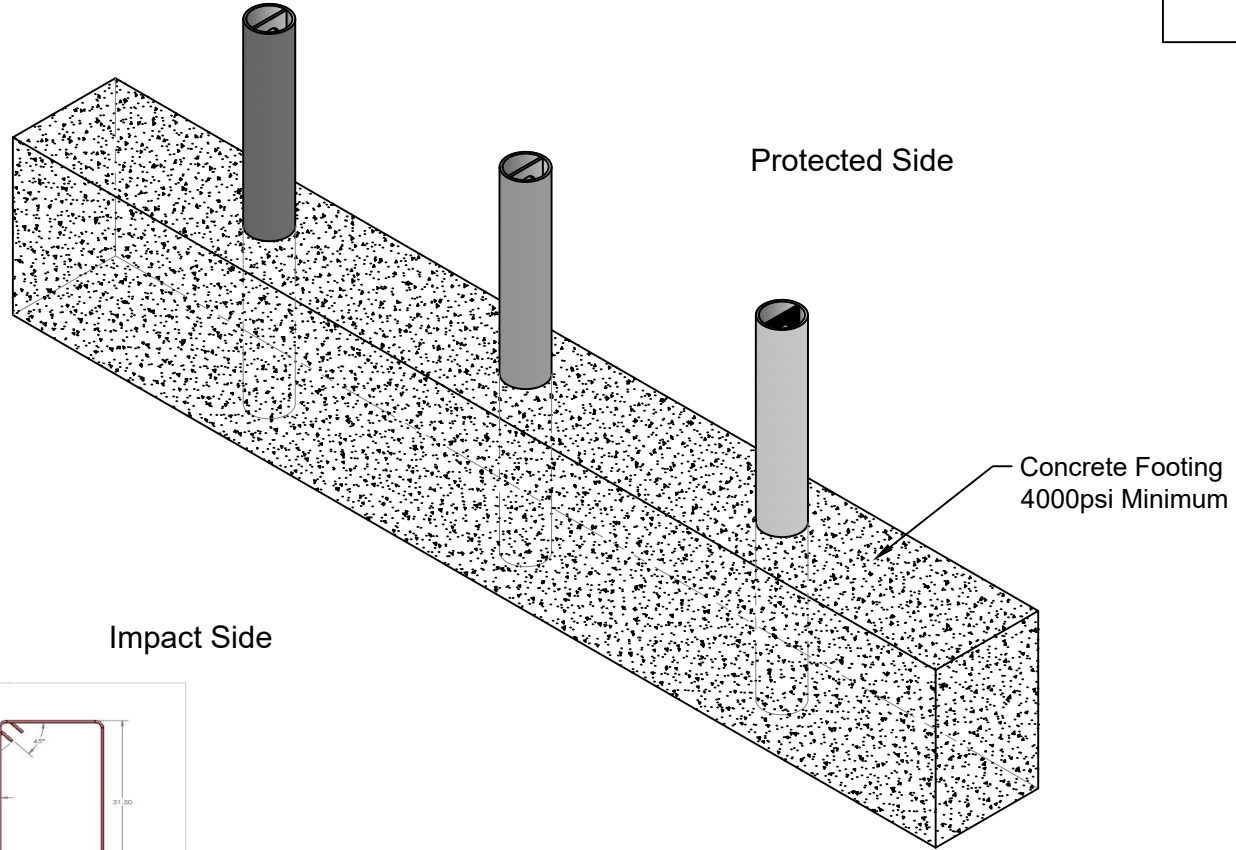


# 1-800-BOLLARDS

*The Bollard Experts*

- SELECT DESIRED MATERIAL:  
(8" NOMINAL SIZE)
- FSSCT08080 SCH 80 STAINLESS STEEL
  - FCSCCT08080 SCH 80 ASTM A-53 CARBON STEEL
- SELECT DESIRED STAINLESS STEEL BOLLARD FINISH:
- POLISHED #4 FINISH
  - AS SPECIFIED \_\_\_\_\_
- SELECT DESIRED CARBON STEEL BOLLARD FINISH:
- POWDER COAT RAL # \_\_\_\_\_
  - AS SPECIFIED \_\_\_\_\_
- SELECT DESIRED STAINLESS STEEL BOLLARD MATERIAL:
- TYPE 304
  - TYPE 316
- SELECT DESIRED BOLLARD CAP STYLE:
- DOME
  - FLAT
  - REVEAL
  - SLOPED



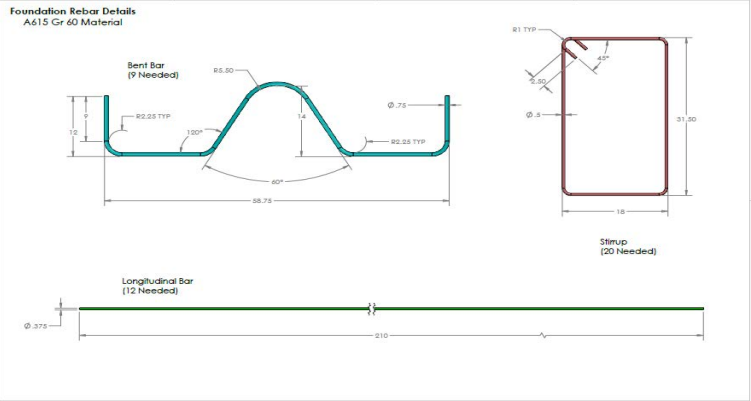
REVISIONS			
LTR	DESCRIPTION	DATE	APPVD

COMMENTS

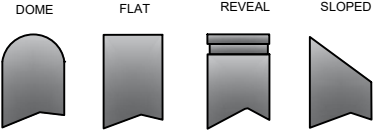
**SPECIFICATIONS**

HEIGHT: 42"  
DIAMETER: 8.625"  
WALL THICKNESS: 0.500"

Impact Side



NOTES:  
1. INSTALLATION TO BE COMPLETED IN ACCORDANCE WITH MANUFACTURER'S SPECIFICATIONS.  
2. DO NOT SCALE DRAWING.  
3. THIS DRAWING IS INTENDED FOR USE BY ARCHITECTS, ENGINEERS, CONTRACTORS, CONSULTANTS AND DESIGN PROFESSIONALS FOR PLANNING AND INSTALLATION PURPOSES.  
4. ALL INFORMATION CONTAINED HEREIN WAS CURRENT AT THE TIME OF DEVELOPMENT BUT MUST BE REVIEWED AND APPROVED BY THE PRODUCT MANUFACTURER TO BE CONSIDERED ACCURATE.







APPLICATION	
NEXT ASSY	USED ON

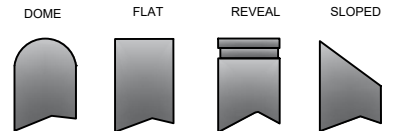
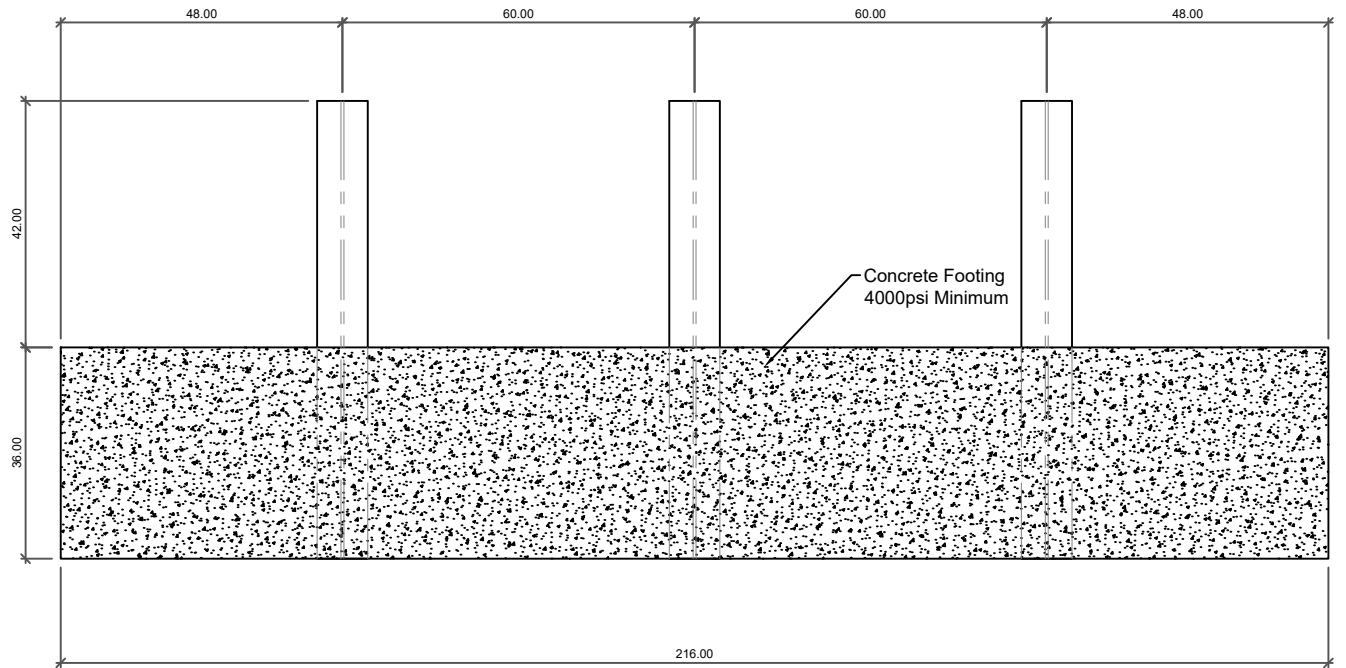
SERIES NUMBER: M30 DEEP MOUNT	CAGE CODE: M30	REV: 8	DRAWING NUMBER: M30DMF
PRODUCT FAMILY: 30 MPH CRASH TESTED	PRODUCT CLASS: STANDARD OR CUSTOMER DEFINED	DRAWN BY: AJA	DRAWING REV:
PRODUCT LINE: BOLLARD	PRODUCT SUB LINE: FIXED	CHECKED BY:	SHEET: 1 OF 1
APPROVED BY:			RELEASE DATE: 1-3-2023
1-800-BOLLARDS, Inc. 10 Hughes Suite A105 Irvine, CA 92618 PHONE: 1-800-BOLLARDS WEB: WWW.1800BOLLARDS.COM EMAIL: INFO@1800BOLLARDS.COM			TITLE: BOLLARD, CT FIXED

# 1-800-BOLLARDS

The Bollard Experts

REVISIONS			
LTR	DESCRIPTION	DATE	APPVD
COMMENTS			
SPECIFICATIONS			
HEIGHT: 42"			
DIAMETER: 8.625"			
WALL THICKNESS: 0.500"			

- SELECT DESIRED MATERIAL:  
(8" NOMINAL SIZE)
  - FSSCT08080 SCH 80 STAINLESS STEEL
  - FCSCT08080 SCH 80 ASTM A-53 CARBON STEEL
- SELECT DESIRED STAINLESS STEEL BOLLARD FINISH:
  - POLISHED #4 FINISH
  - AS SPECIFIED \_\_\_\_\_
- SELECT DESIRED CARBON STEEL BOLLARD FINISH:
  - POWDER COAT RAL # \_\_\_\_\_
  - AS SPECIFIED \_\_\_\_\_
- SELECT DESIRED STAINLESS STEEL BOLLARD MATERIAL:
  - TYPE 304
  - TYPE 316
- SELECT DESIRED BOLLARD CAP STYLE:
  -  DOME
  -  FLAT
  -  REVEAL
  -  SLOPED

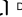
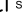




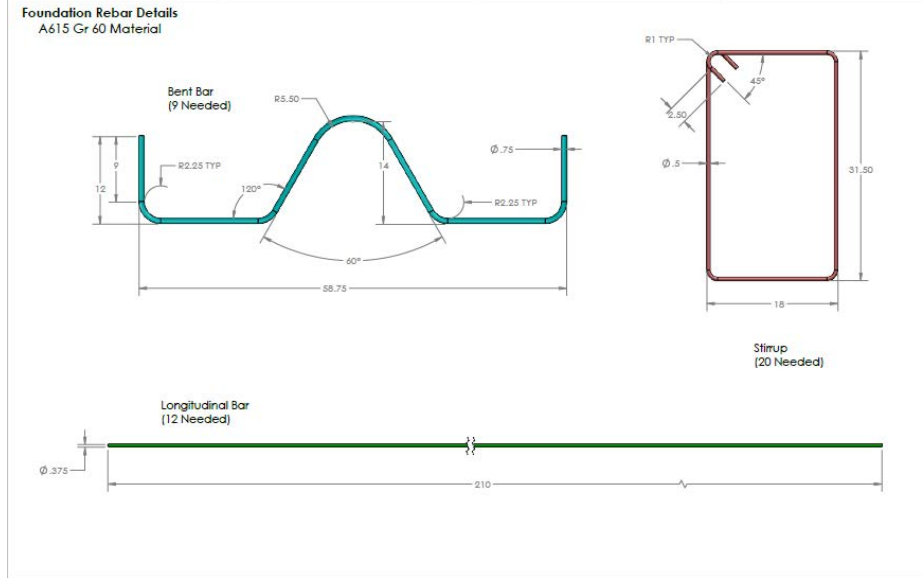
APPLICATION		SERIES NUMBER	M30 FIXED DEEP	CAGE CODE	M30	SIZE	8	DRAWING NUMBER	M30DMF
NEXT ASSY	USED ON	PRODUCT FAMILY	30 MPH CRASH TESTED	DRAWN BY	AJA	CHECKED BY		DRAWING REV	
		PRODUCT CLASS	STANDARD OR CUSTOMER DEFINED	PRODUCT LINE	BOLLARD	APPROVED BY		SHEET	1 OF 1
		PRODUCT SUB LINE	FIXED	APPROVED BY		RELEASE DATE	1-3-2023	TITLE	BOLLARD, CT FIXED
		1-800-BOLLARDS, Inc. 10 Hughes Suite A105 Irvine, CA 92618 PHONE: 1-800-BOLLARDS WEB: WWW.1800BOLLARDS.COM EMAIL: INFO@1800BOLLARDS.COM							

NOTES:  
 1. INSTALLATION TO BE COMPLETED IN ACCORDANCE WITH MANUFACTURER'S SPECIFICATIONS.  
 2. DO NOT SCALE DRAWING.  
 3. THIS DRAWING IS INTENDED FOR USE BY ARCHITECTS, ENGINEERS, CONTRACTORS, CONSULTANTS AND DESIGN PROFESSIONALS FOR PLANNING AND INSTALLATION PURPOSES.  
 4. ALL INFORMATION CONTAINED HEREIN WAS CURRENT AT THE TIME OF DEVELOPMENT BUT MUST BE REVIEWED AND APPROVED BY THE PRODUCT MANUFACTURER TO BE CONSIDERED ACCURATE.

# 1-800-BOLLARDS

The Bollard Experts

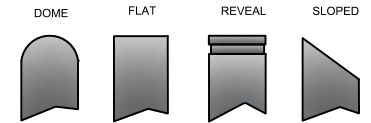
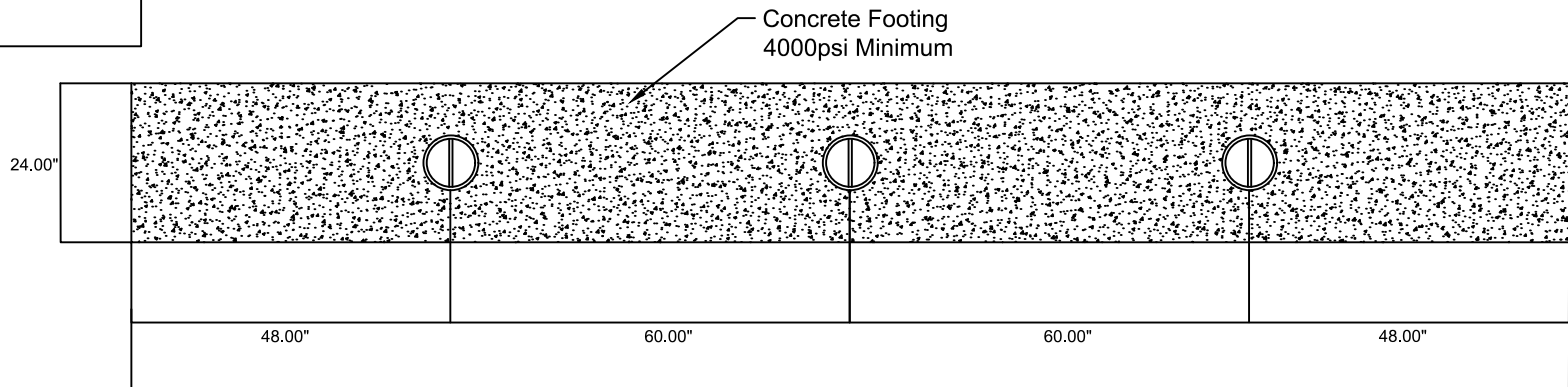
- SELECT DESIRED MATERIAL:  
(8" NOMINAL SIZE)
  - FSSCT08080 SCH 80 STAINLESS STEEL
  - FCSCCT08080 SCH 80 ASTM A-53 CARBON STEEL
- SELECT DESIRED STAINLESS STEEL BOLLARD FINISH:
  - POLISHED #4 FINISH
  - AS SPECIFIED \_\_\_\_\_
- SELECT DESIRED CARBON STEEL BOLLARD FINISH:
  - POWDER COAT RAL # \_\_\_\_\_
  - AS SPECIFIED \_\_\_\_\_
- SELECT DESIRED STAINLESS STEEL BOLLARD MATERIAL:
  - TYPE 304
  - TYPE 316
- SELECT DESIRED BOLLARD CAP STYLE:
  -  DOME
  -  STANDARD FLAT
  -  REVEAL
  -  SLOPED



REVISIONS			
LTR	DESCRIPTION	DATE	APP
COMMENTS			

**SPECIFICATIONS**

HEIGHT: 42"  
DIAMETER: 8.625"  
WALL THICKNESS: 0.500"



NOTES:  
1. INSTALLATION TO BE COMPLETED IN ACCORDANCE WITH MANUFACTURER'S SPECIFICATIONS.  
2. DO NOT SCALE DRAWING.  
3. THIS DRAWING IS INTENDED FOR USE BY ARCHITECTS, ENGINEERS, CONTRACTORS, CONSULTANTS AND DESIGN PROFESSIONALS FOR PLANNING AND INSTALLATION PURPOSES.  
4. ALL INFORMATION CONTAINED HEREIN WAS CURRENT AT THE TIME OF DEVELOPMENT BUT MUST BE REVIEWED AND APPROVED BY THE PRODUCT MANUFACTURER TO BE CONSIDERED ACCURATE.

APPLICATION		1-800-BOLLARDS, Inc. 10 Hughes Suite 1100 Irvine, CA 92618 PHONE: 1-800-BOLLARDS WEB: WWW.1800BOLLARDS.COM EMAIL: INFO@1800BOLLARDS.COM	TITLE: BOLLARD, CT FIXED	
NEXT ASSY	USED ON		DATE	BY

SERIES NUMBER:	M30 DEEP MOUNT	CAGE CODE:	M30	REV:	8	DRAWING NUMBER:	M30DMF
PRODUCT FAMILY:	30 MPH CRASH TESTED	DESIGNED BY:	AJA	DRAWING REV:		SHEET:	1 OF 1
PRODUCT CLASS:	STANDARD OR CUSTOMER DEFINED	APPROVED BY:		RELEASE DATE:	1-3-2023		
PRODUCT LINE:	BOLLARD						
PRODUCT SUB LINE:	FIXED						